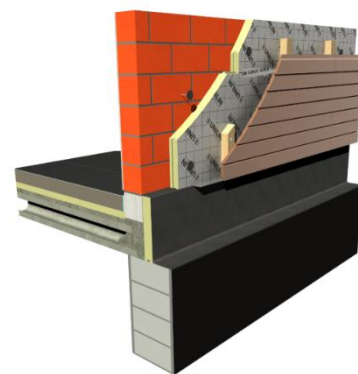
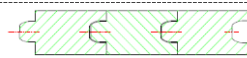


UTHERM Wall PIR L



UTHERM Wall PIR L is a high performance rigid PIR insulation board faced, both sides, with a gastight aluminium composite foil facing.

Product characteristics

Facing	L: gastight aluminium composite foil facing
Isolatiekern	PIR (polyisocyanuraat)
Randafwerking	Tongue and groove on 4 sides 
Afmetingen	1200 mm x 600 mm
Thermal conductivity : λ_D according to EN13165: 2015	0,022 W/mK
Compression strength at 10% deformation: CS(10/Y)150 according to EN826	≥ 150 kPa (1,5 kg/cm ²).
Tensile strength perpendicular	TR80 ≥ 80 kPa
Dimensional stability 48h, 70°C, 90%RV 48h, -20°C	DS(70,90)3: $\Delta e_{l,b} \leq 2$ / $\Delta e_d \leq 6$ DS(-20,-)1: $\Delta e_{l,b} \leq 1$ / $\Delta e_d \leq 2$
Deformation under pressure and temperature	DLT(2) $\leq 5\%$
Density PIR foam	32kg/m ³ ± 3 kg/m ³
Vapour diffusion resistance factor PIR foam (μ)	50-100
Reaction to fire	F (EN 13501-1)

Product range

Thickness [mm]	R _D -value [m ² K/W]
40	1,80
50	2,25
60	2,70
70	3,15
82	3,70
92	4,15
100	4,50
120	5,45
140	6,35
160	7,25
180*	8,15
200*	9,05

Some thicknesses may be subject to minimum order quantities. Please contact UNILIN division insulation for more information about availability.

Utherm Wall PIR L insulation boards come with an CE-mark

